



# MicroRNA Profiling of a Familial Primary Pulmonary Enteric Adenocarcinoma

**Ingrid Garajová**<sup>1,2</sup>, Niccola Funel<sup>3,4</sup>, Michelangelo Fiorentino<sup>5</sup>, Valentina Agostini<sup>5</sup>, Manuela Ferracin<sup>6,7</sup>, Massimo Negrini<sup>6,7</sup>, Giovanni Luca Frassinetti<sup>8</sup>, Christian Rolfo<sup>9</sup>, Guido Biasco<sup>2\*\*</sup>, Elisa Giovannetti<sup>1,4,\*\*</sup>

<sup>1</sup>Department of Medical Oncology, VU University Medical Center, Cancer Center Amsterdam, Amsterdam, The Netherlands

<sup>2</sup>Department of Experimental, Diagnostic and Speciality Medicine, University of Bologna, Sant'Orsola-Malpighi Hospital, Bologna, Italy

<sup>3</sup>Division of General and Transplant Surgery, Pisa University Hospital Pisa, Pisa, Italy

<sup>4</sup>Cancer Pharmacology Lab, Start-Up Unit, University of Pisa, Pisa, Italy

<sup>5</sup>Department of Pathology, S.Orsola Malpighi Hospital, Bologna, Italy

<sup>6</sup>Department of Morphology, Surgery and Experimental Medicine, University of Ferrara, Ferrara, Italy

<sup>7</sup>Laboratory for Technologies of Advanced Therapies (LTTA), University of Ferrara, Ferrara, Italy

<sup>8</sup>Department of Medical Oncology, Istituto Scientifico Romagnolo per lo Studio e la Cura dei Tumori (IRST) IRCCS, Meldola, Italy

<sup>9</sup>Phase I-Early Clinical Trials Unit, Department of Medical Oncology, Antwerp University Hospital, Edegem, Belgium

- pulmonary enteric adenocarcinoma (PEAC) is a rare lung adenocarcinoma with a predominant component (>50%) of intestinal differentiation and tumor cells positive for at least one intestinal marker (CDX2, CK20, MUC2)
- only 31 cases in literature and occurrence in two family members has never been reported before
- PEAC should be distinguished from metastatic colorectal carcinoma because of the different treatment strategy and prognosis
- due to its rarity and peculiarity, no specific guidelines for therapy exist

## **Aim of the study**

- molecular and histological characterization of a PEAC from a patient with another family member affected by the same tumor

# Methods

**Journal of Pathology**

*J Pathol* 2011; **225**: 43–53

Published online 1 June 2011 in Wiley Online Library

(wileyonlinelibrary.com) DOI: 10.1002/path.2915

**ORIGINAL PAPER**

## MicroRNA profiling for the identification of cancers with unknown primary tissue-of-origin

Manuela Ferracin,<sup>1,2</sup> Massimo Pedriali,<sup>1</sup> Angelo Veronese,<sup>1,3</sup> Barbara Zagatti,<sup>1</sup> Roberta Gafà,<sup>1</sup> Eros Magri,<sup>1</sup> Maria Lunardi,<sup>1</sup> Gardenia Munerato,<sup>1</sup> Giulia Querzoli,<sup>1</sup> Iva Maestri,<sup>1</sup> Linda Ulazzi,<sup>1</sup> Italo Nenci,<sup>1</sup> Carlo M Croce,<sup>3</sup> Giovanni Lanza,<sup>1</sup> Patrizia Querzoli<sup>1\*</sup> and Massimo Negrini<sup>1,2\*</sup>

The molecular characteristics of proband's PEAC were evaluated applying a previously validated 47-miRNA diagnostic classifier to predict tumor primary origin.

It has high overall accuracy of 100% for primary cancers and 78% for metastases.

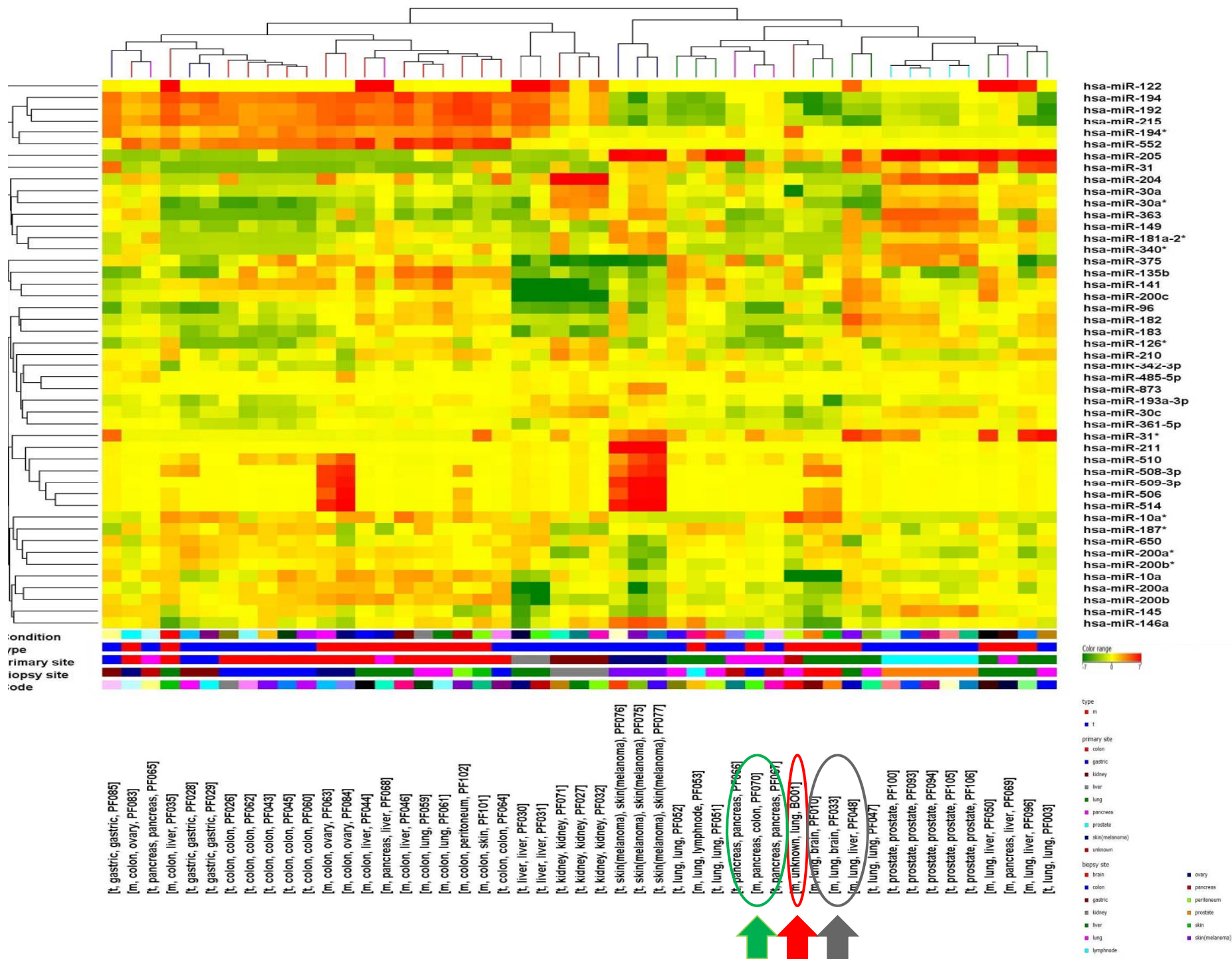
# Results

Characteristic	Proband	His sister
General		
Age at diagnosis (years)	68	71
Smoking habit	Yes	Yes
Primary localization	lung: right/lower lobe	lung: right/lower lobe
Colonoscopy	multiple benign polyps (N<10), diverticulosis	multiple benign polyps (N<10), diverticulosis
Radical surgery (R0)	Yes	Yes
Metastases/DFS (months)	bone / 1.5	lung, adrenal glands / 12
Histological findings		
Histology	PEAC	PEAC
Stage (pTNM)	pT2apN1	pT2apN0
IHC analyses		
TTF-1	NEG	NEG
Napsin A	NEG	NA
CK7	POS	NEG
CK20	NEG	POS
CDX2	POS	POS
MUC1	POS	NA
MUC2	NEG	NA
MUC5A	POS	NA
MUC6	NEG	NA
Genetic aberrations		
EGFR	wild type	wild type
K-RAS	Gly12Asp mutation	Gly12Asp mutation
ALK	wild type	wild type

## Familial aggregation of PEAC was associated with:

- **similar clinicopathological features**
  - age at diagnosis
  - smoking-habit
  - tumor localization
  - multiple benign colon polyps
- **histologic findings**
  - TTF-1 negativity
  - CDX2 positivity
- **genetic findings**
  - K-RAS(Gly12Asp) mutation
  - no EGFR/ALK aberrations

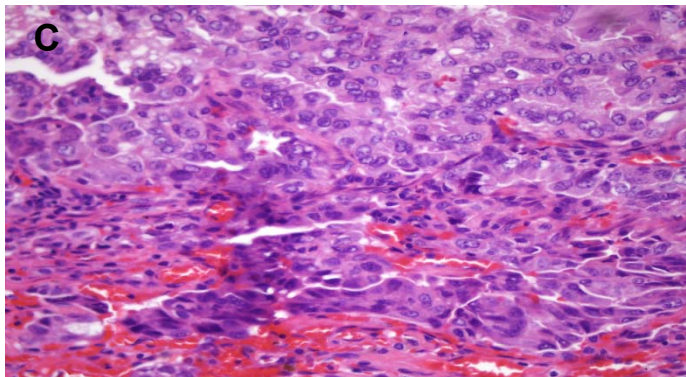
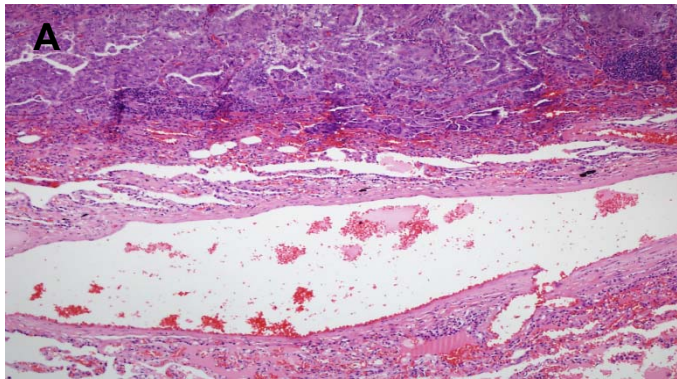
- miRNA profiling revealed main similarities with lung cancer (75.98%), and partial overlap with pancreatic cancer (23.34%), but not with colorectal cancer (less than 0.5%)
- PEAC shares with pancreatic cancer key miRNAs associated with tumor aggressiveness:
  - miR-31
  - miR-126
  - miR-506
  - miR-508-3p
  - miR-514



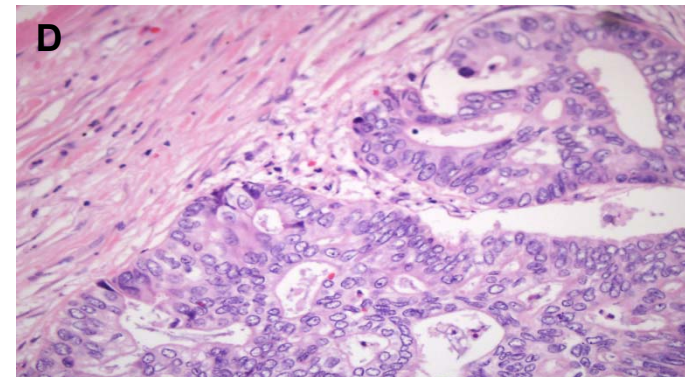
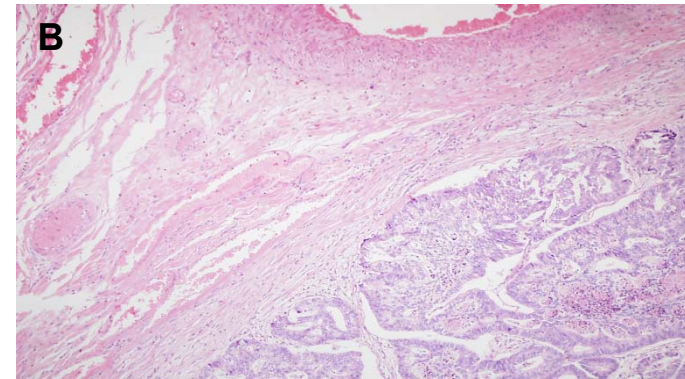


**Histological analyses revealed the presence of two different phenotypes in the lung lesion of the proband: NSCLC (30%) and PEAC (70%).**

**NSCLC**



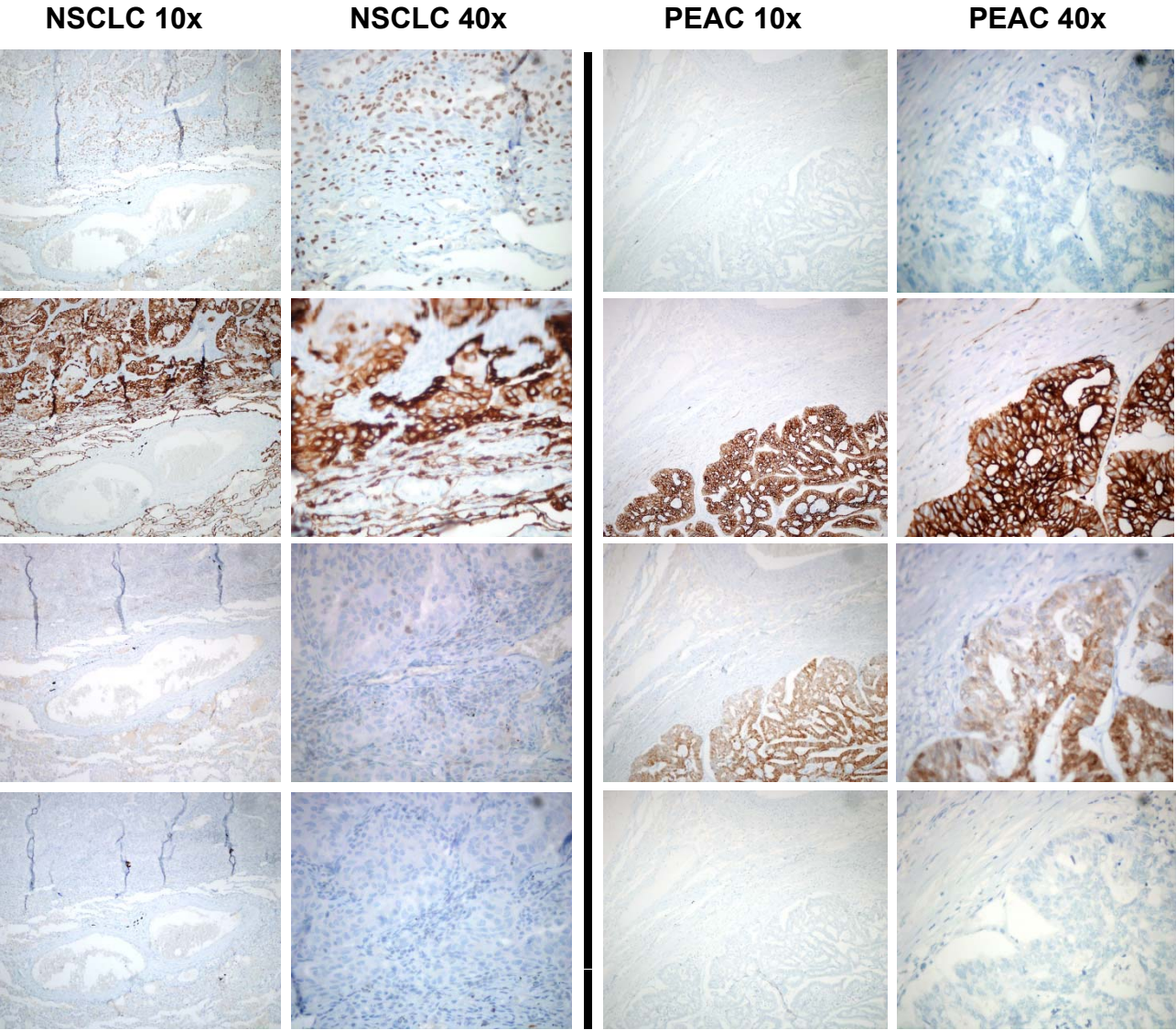
**PEAC**





IHC Marker	NSCLC Phenotype	PEAC Phenotype
TTF1	+	-
CK7	+	+
CDX2	-	+
CK20	-	-

TTF-1



CK 7

CDX2

CK20

# Conclusions

- we described, for the first time, a case of PEAC in two members of the same family, associated with similar clinicopathological feature and histological/genetic findings
- miRNA profiling of PEAC resembled mostly NSCLC, with a partial overlap with PDAC's pattern that could explain:
  - aggressive behavior compared to most NSCLC
  - guide future tailored-therapy approaches

# Thank you for your attention!

## Special thanks to:

Dr. Elisa Giovannetti  
(Amsterdam, Pisa)



Prof. Guido Biasco  
(Bologna)



## Thanks to:

Dr. Niccola Funel  
Dr. Michelangelo Fiorentino  
Dr. Valentina Agostini  
Dr. Manuela Ferracin  
Dr. Massimo Negrini  
Dr. Giovanni Luca Frassinetti  
Dr. Christian Rolfo

**Email: [ingegarajova@gmail.com](mailto:ingegarajova@gmail.com)**